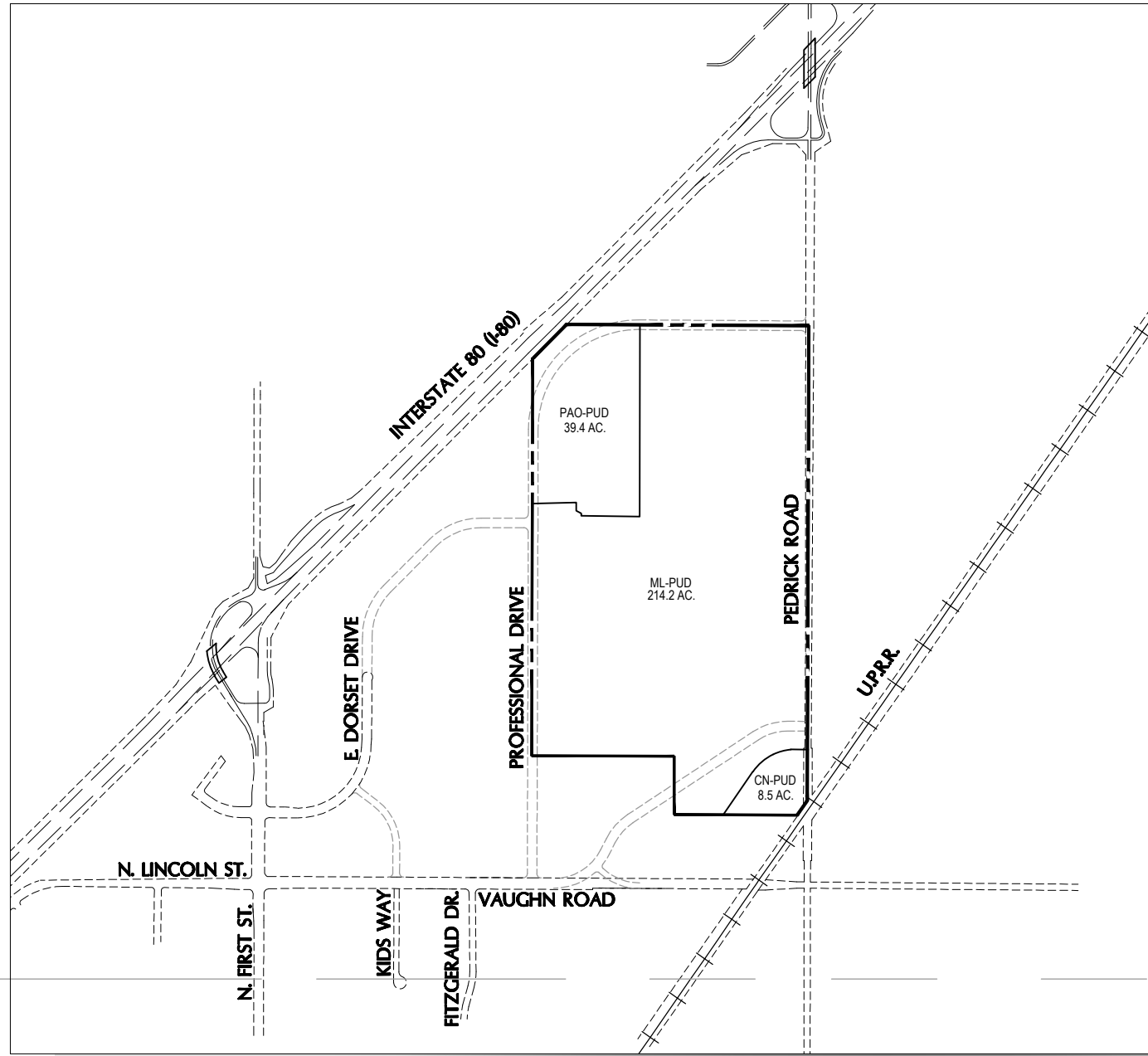
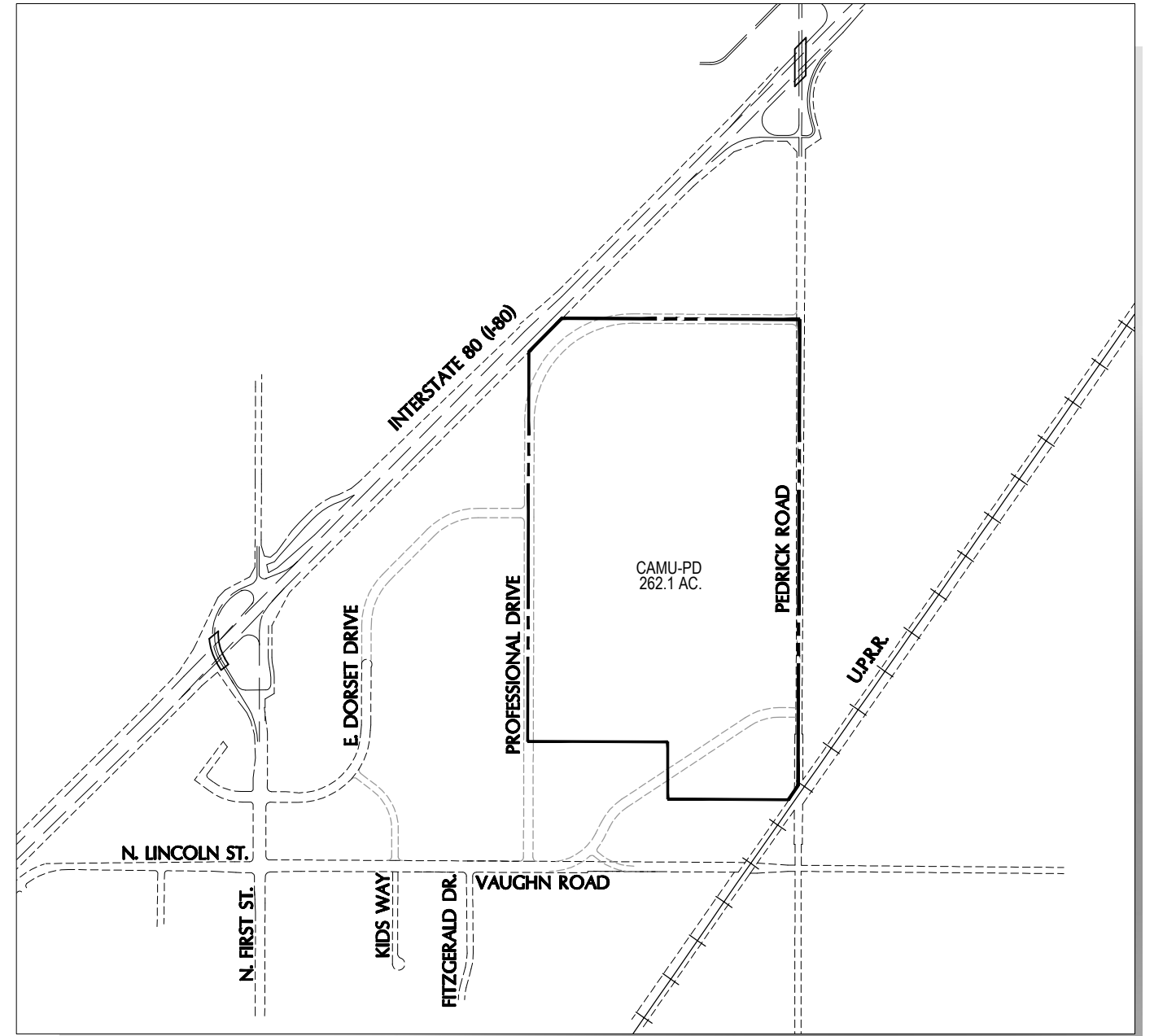


Dwg: X:\2020\20-0024-00 (MAGNA PARCEL-DIXON)\DWG\PLANS\EXHIBIT 21\1203.DWG | Saved: 07-13-23 05:26pm GBARDINI



EXISTING ZONING



PROPOSED ZONING

REZONE SUMMARY TABLE		TOTALS		
DESIGNATION	LAND USE	EXISTING	PROPOSED	DIFFERENCE
PAO-PUD	PROFESSIONAL & ADMIN OFFICE	39.4± Ac	0.0± Ac	-39.4± Ac
CN-PUD	NEIGHBORHOOD COMMERCIAL	8.5± Ac	0.0± Ac	-8.5± Ac
ML-PUD	LIGHT INDUSTRIAL	214.2± Ac	0.0± Ac	-214.2± Ac
CAMU-PD	CAMPUS MIXED-USE	0.0± Ac	262.1± Ac	+ 262.1± Ac
TOTALS		262.1± Ac	262.1± Ac	

THE CAMPUS NORTHEAST QUADRANT SPECIFIC PLAN

REZONE
SHEET 1 OF 1
JULY 14, 2023



MORTON & PITALO, INC.
CIVIL ENGINEERING • LAND PLANNING • LAND SURVEYING
Folsom • Fresno
600 Coolidge Drive, Suite #140
Folsom, CA 95630
phone: (916) 984-7621
web: www.mpengr.com

